



**Brincando com  
a palavra...**

**Árvore!**



PROEX  
Pró-Reitoria de  
Extensão



UNEB  
UNIVERSIDADE DO  
ESTADO DA BAHIA



DEPARTAMENTO DE EDUCAÇÃO – DEDC VIII  
COLEGIADO DE CIÊNCIAS BIOLÓGICAS - CCB

**Coleção didático-científica**

**“Ruas cuidadas, saúde em casa”**

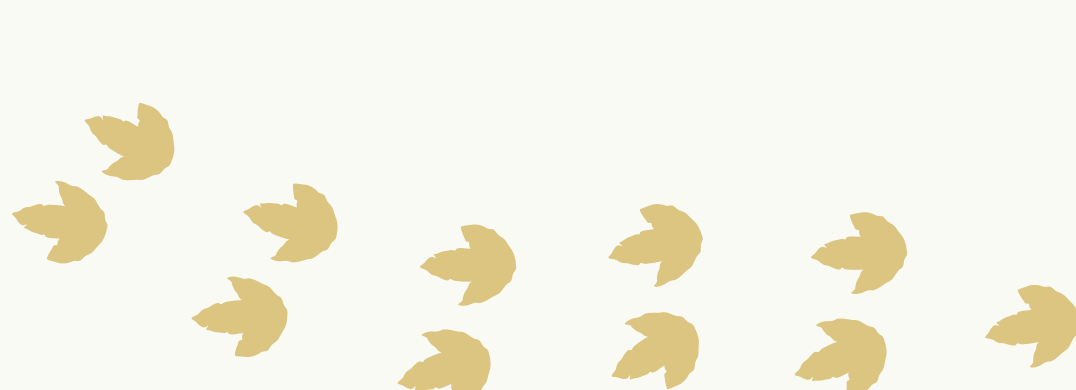
**Cidadania socioambiental ativa**

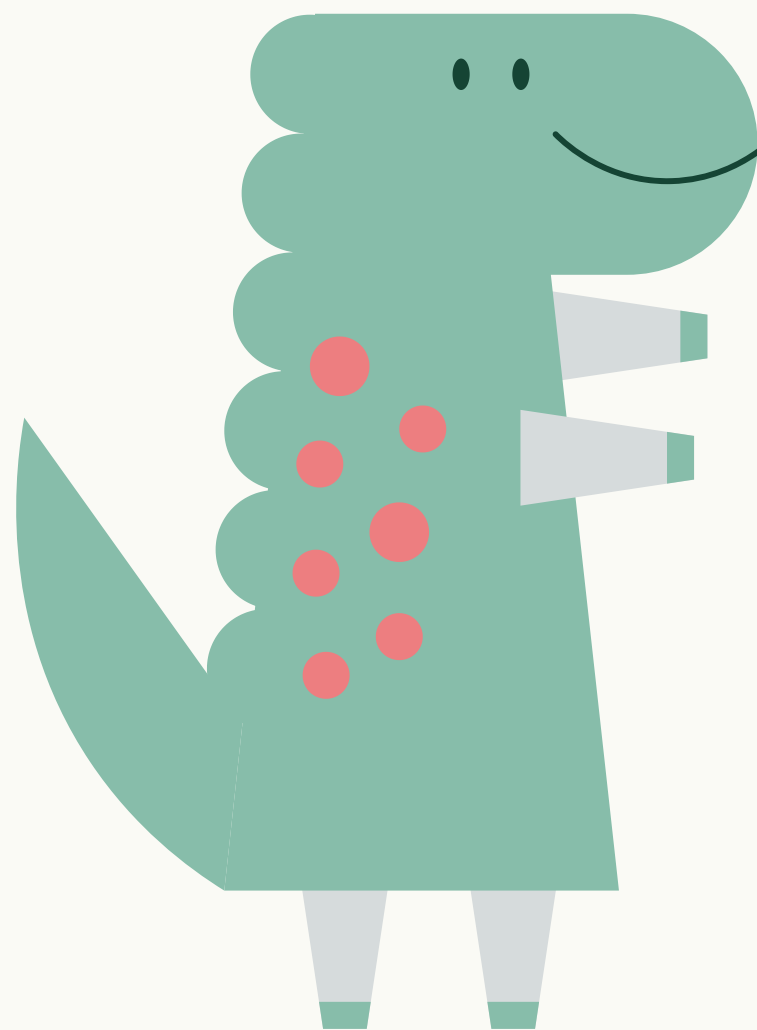
Texto e Designer  
**Josilda Batista Lima Mesquita Xavier**

Equipe Editorial  
**Isabelle Maísa Remídio**  
(Bolsista PROIEX)  
**Denner Henrique Lopes Alves**  
(Voluntário PROIEX)  
**Josilda B. Lima M. Xavier**  
(Docente coordenadora)

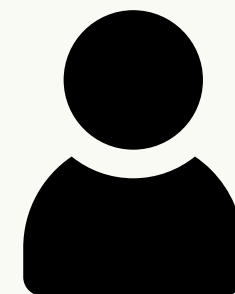
Elementos gráficos: Canva

Paulo Afonso / 2025

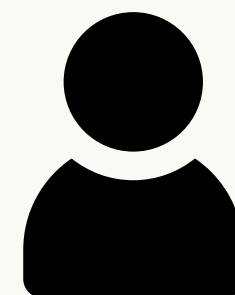




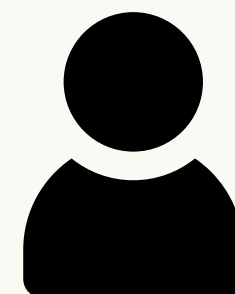
# Conheça a equipe



Nome do membro nº 1



Nome do membro nº 2



Nome do membro nº 3



**Você está  
pronto(a)  
para falar de  
árvores?**





# Nível: Fácil

Escreva o maior número possível de nomes de árvores frutíferas que você conhece em 1 minuto.

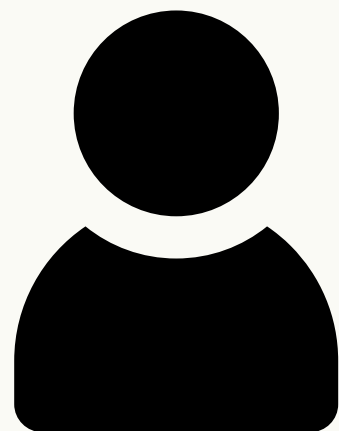


Tic Tac Tic Tac ...

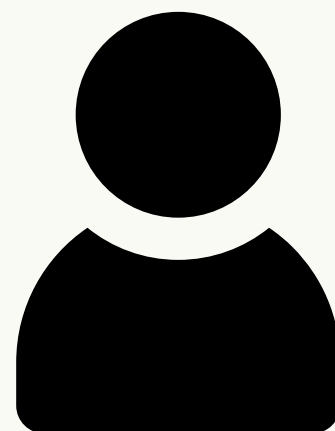
# 1ª Rodada - Folha de Respostas



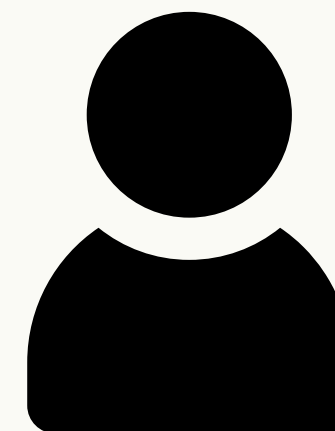
Atribua uma estrela ao vencedor da rodada!



- 
- A handwriting practice sheet featuring two columns of ten dotted lines each, designed for tracing and writing practice. The lines are evenly spaced and extend across the width of each column.



- [illegible]



- 
- A handwriting practice sheet with two columns of dotted lines for tracing. Each column contains eight rows, each starting with a solid black dot followed by a series of dots.



# Nível: Fácil

Escreva o maior número possível de nomes dos frutos das árvores que você lembrou na etapa anterior em 1 minuto.

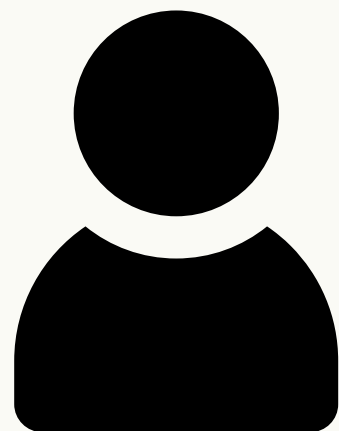


Tic Tac Tic Tac ...

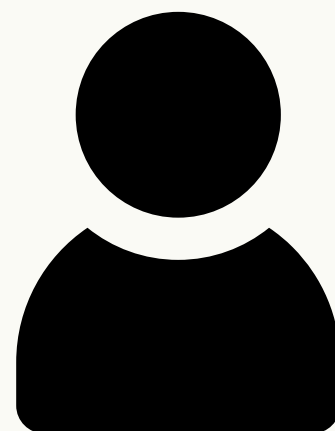
# 2ª Rodada - Folha de Respostas



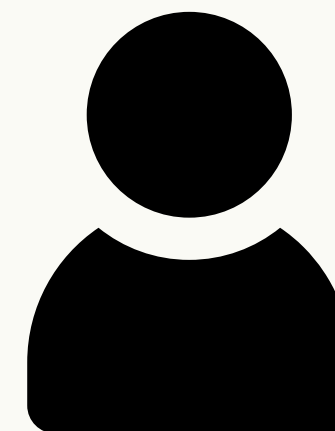
Atribua uma estrela ao vencedor da rodada!



- 
- A handwriting practice sheet featuring two columns of ten dotted lines each, designed for tracing and writing practice. The lines are evenly spaced and extend across the width of each column.



- [illegible]



- 
- A handwriting practice sheet with two columns of dotted lines for tracing. Each column contains eight rows, each starting with a solid black dot followed by a series of dots.



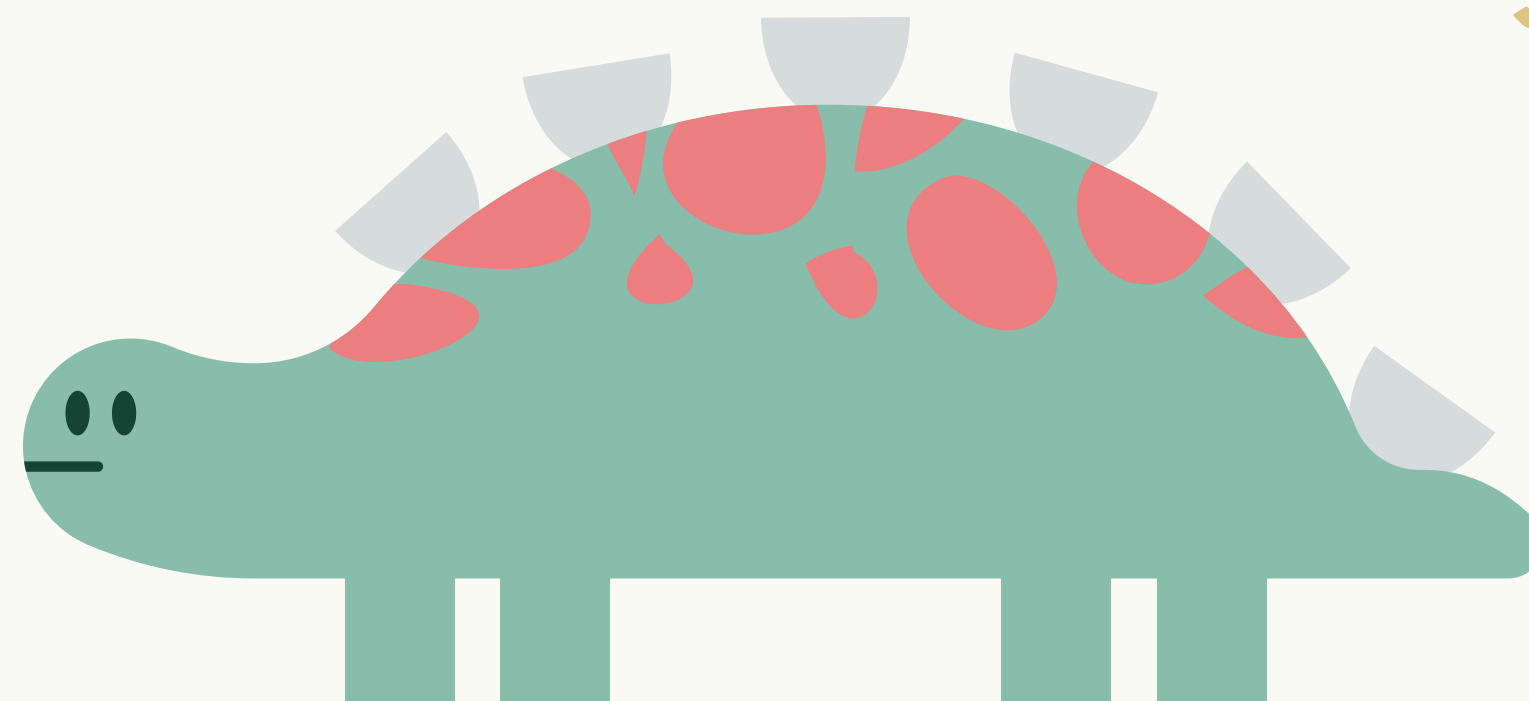


# Nível: Médio

Encontre no caça-palavras o maior número possível de nomes das estruturas que constituem uma árvore em 1 minuto.



Tic Tac Tic Tac ...

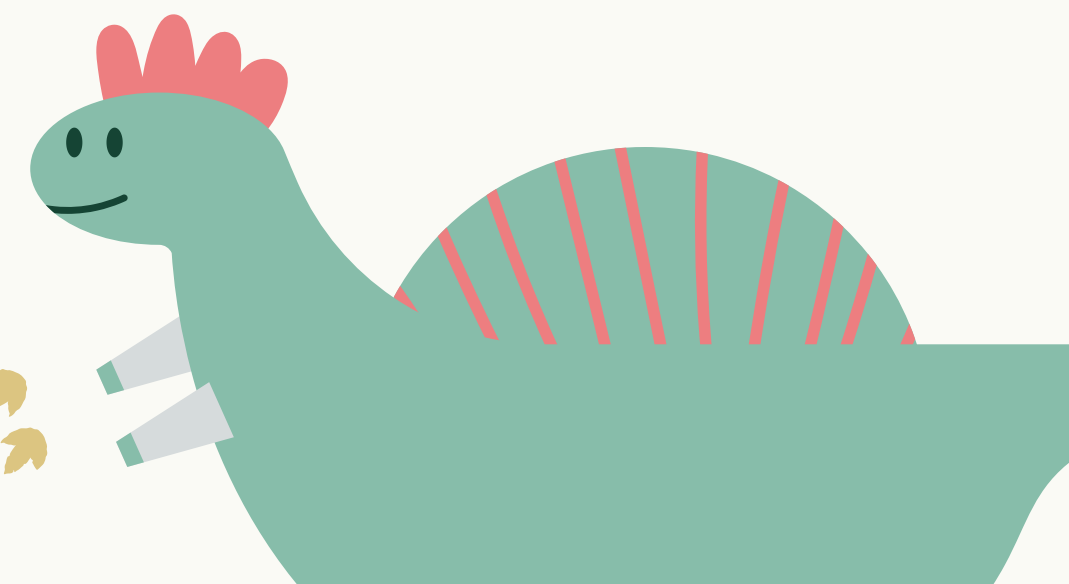




Tic Tac Tic Tac ...

E	F	E	A	E	S	T	H	H	E	G	N
Y	R	L	F	A	R	F	R	U	T	A	I
I	A	S	O	E	O	P	I	H	E	T	M
R	I	E	L	R	É	E	E	E	W	H	N
F	Z	O	H	T	T	R	P	I	S	E	K
T	O	M	A	L	N	T	T	P	A	H	R
H	R	L	I	L	R	E	I	Ó	O	N	D
N	A	H	Í	O	S	G	A	L	H	O	P
I	E	C	N	O	S	E	M	E	N	T	E
B	E	C	A	U	L	E	E	N	H	W	R
O	O	E	E	T	T	O	N	I	I	I	T
S	V	O	G	N	D	H	N	U	I	S	S

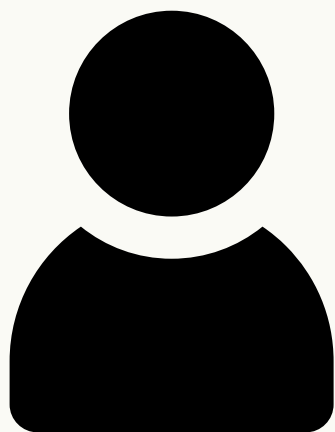
Depressa! Escrevam suas respostas. O tempo está passando.



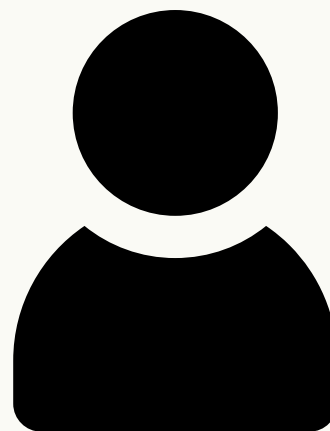
# 3ª Rodada - Folha de Respostas



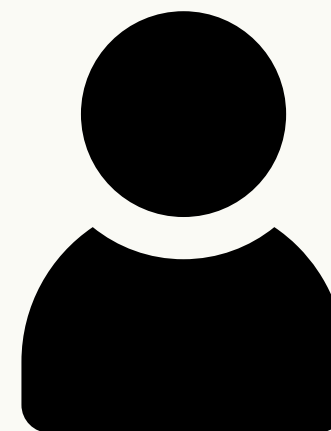
Atribua uma estrela ao vencedor da rodada!



- 



- [illegible]



- [illegible]





# Nível: Médio

Encontre no caça-palavras o maior número possível de nomes de árvores da Caatinga em 1 minuto.



Tic Tac Tic Tac ...

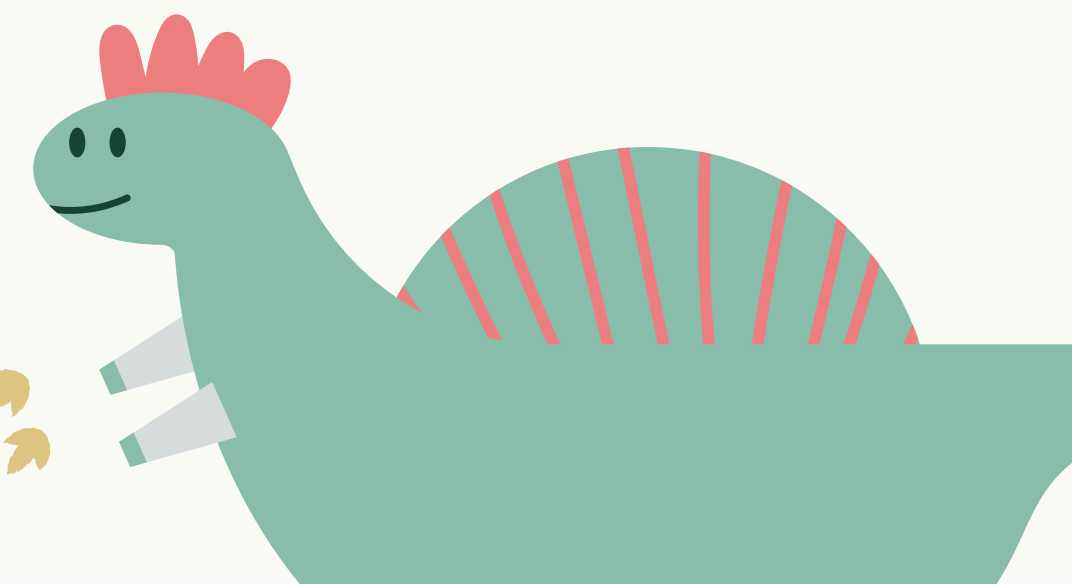




Tic Tac Tic Tac ...

T	E	A	T	U	E	N	T	E	T	A	F
E	C	A	T	I	N	G	U	E	I	R	A
B	O	U	C	I	R	R	U	C	T	E	V
A	C	A	M	A	Y	H	A	T	W	E	E
R	T	A	W	B	J	E	L	V	L	T	L
A	L	H	R	S	U	U	N	E	C	C	E
Ú	S	I	A	N	O	Z	E	H	A	Y	I
N	E	P	J	U	A	Z	E	I	R	O	R
A	H	D	G	N	U	Ú	E	I	R	E	A
E	N	P	S	A	R	L	B	I	R	O	B
T	E	W	I	I	E	O	S	A	H	O	Y
C	J	U	R	E	M	A	P	R	E	T	A

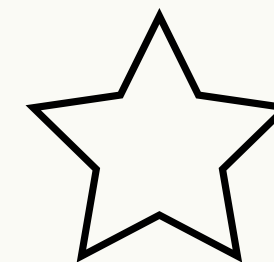
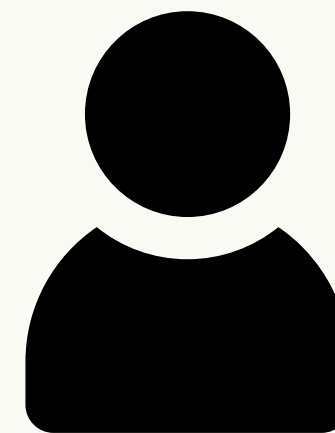
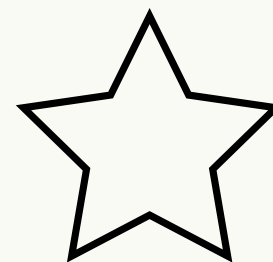
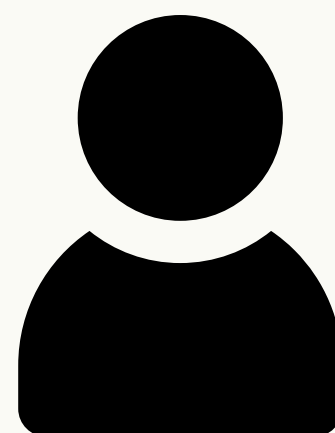
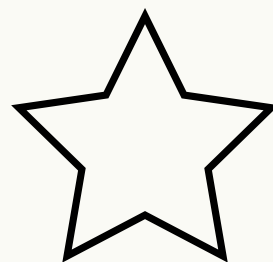
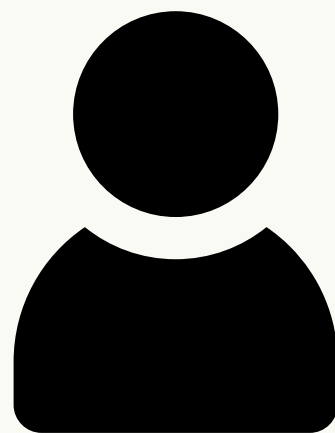
Depressa! Escrevam suas respostas. O tempo está passando.



# 4ª Rodada - Folha de Respostas



Pinte e atribua uma estrela ao vencedor da rodada!

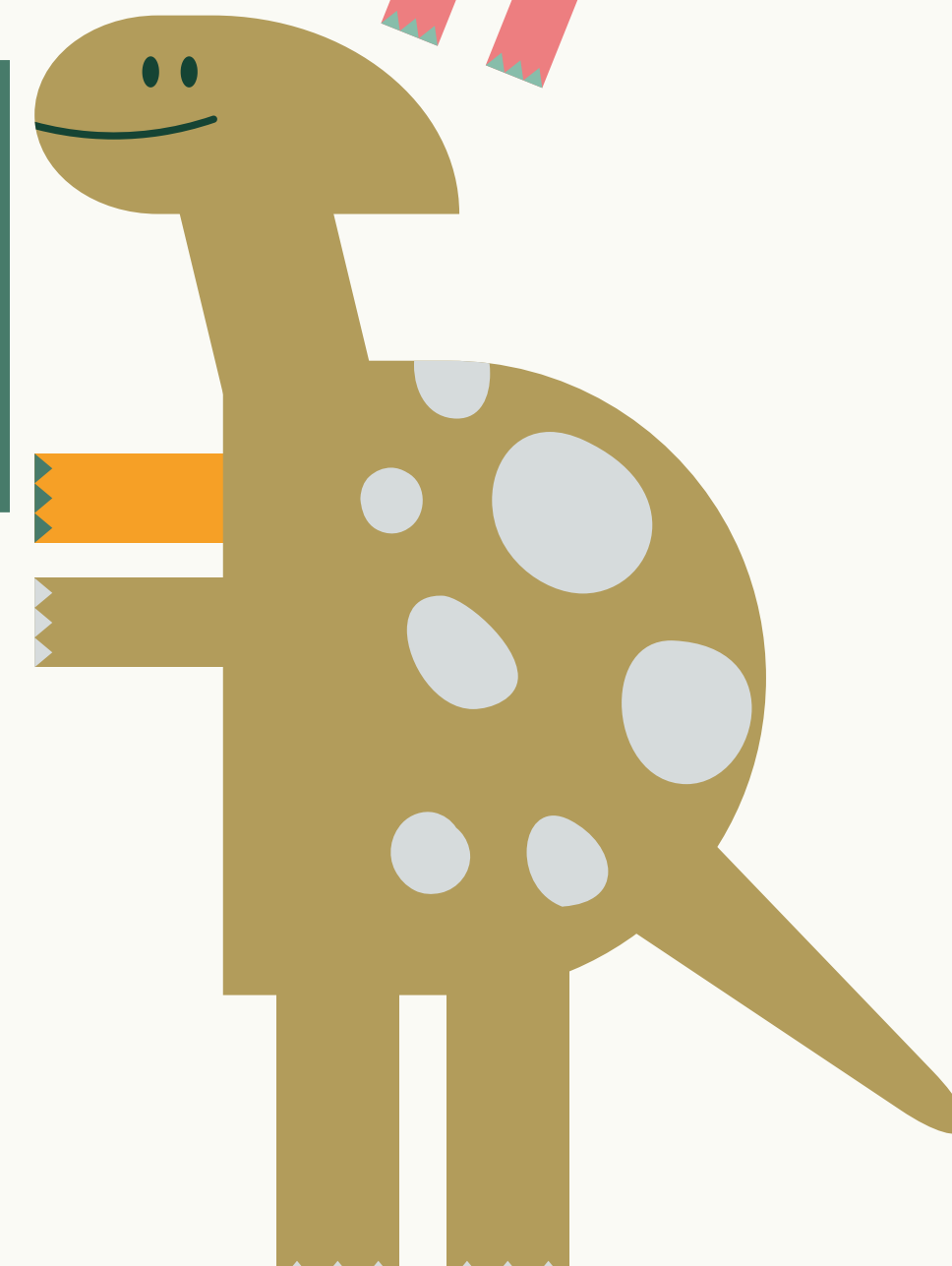


# Nível: Difícil

Escreva o maior número de palavras que representem benefícios que as árvores promovem aos seres humanos e ao ambiente em 1 minuto.



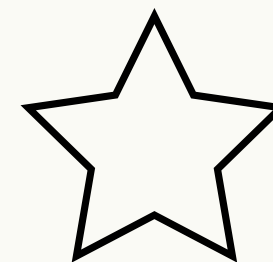
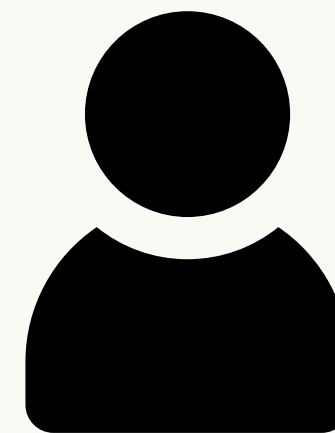
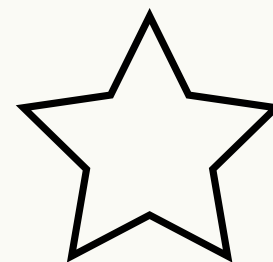
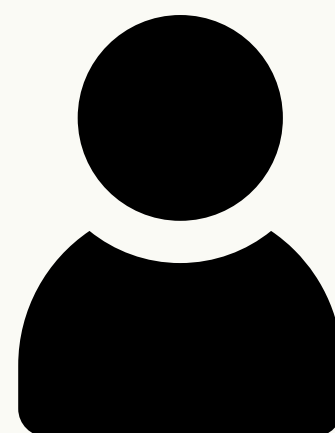
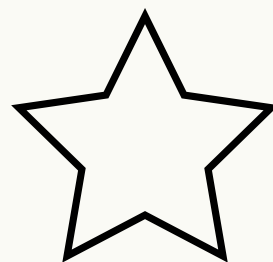
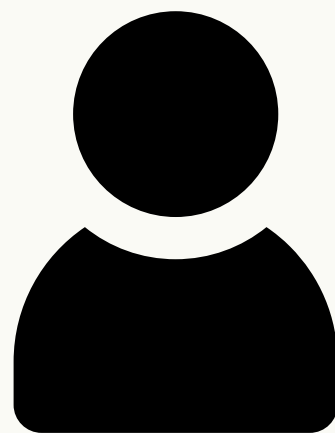
Tic Tac Tic Tac ...



# 5ª Rodada - Folha de Respostas



Pinte e atribua uma estrela ao vencedor da rodada!







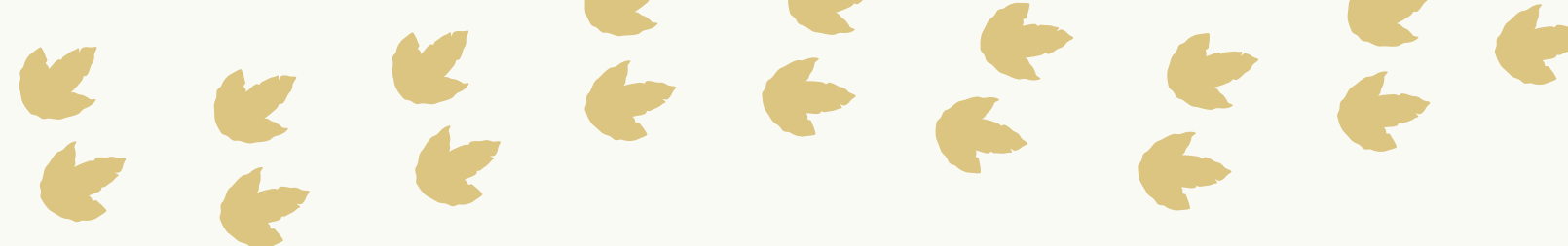
# Nível: Difícil

Você consegue encontrar o caminho para a caatinga onde será feita a plantação de mudas nativas, em 1 minuto?

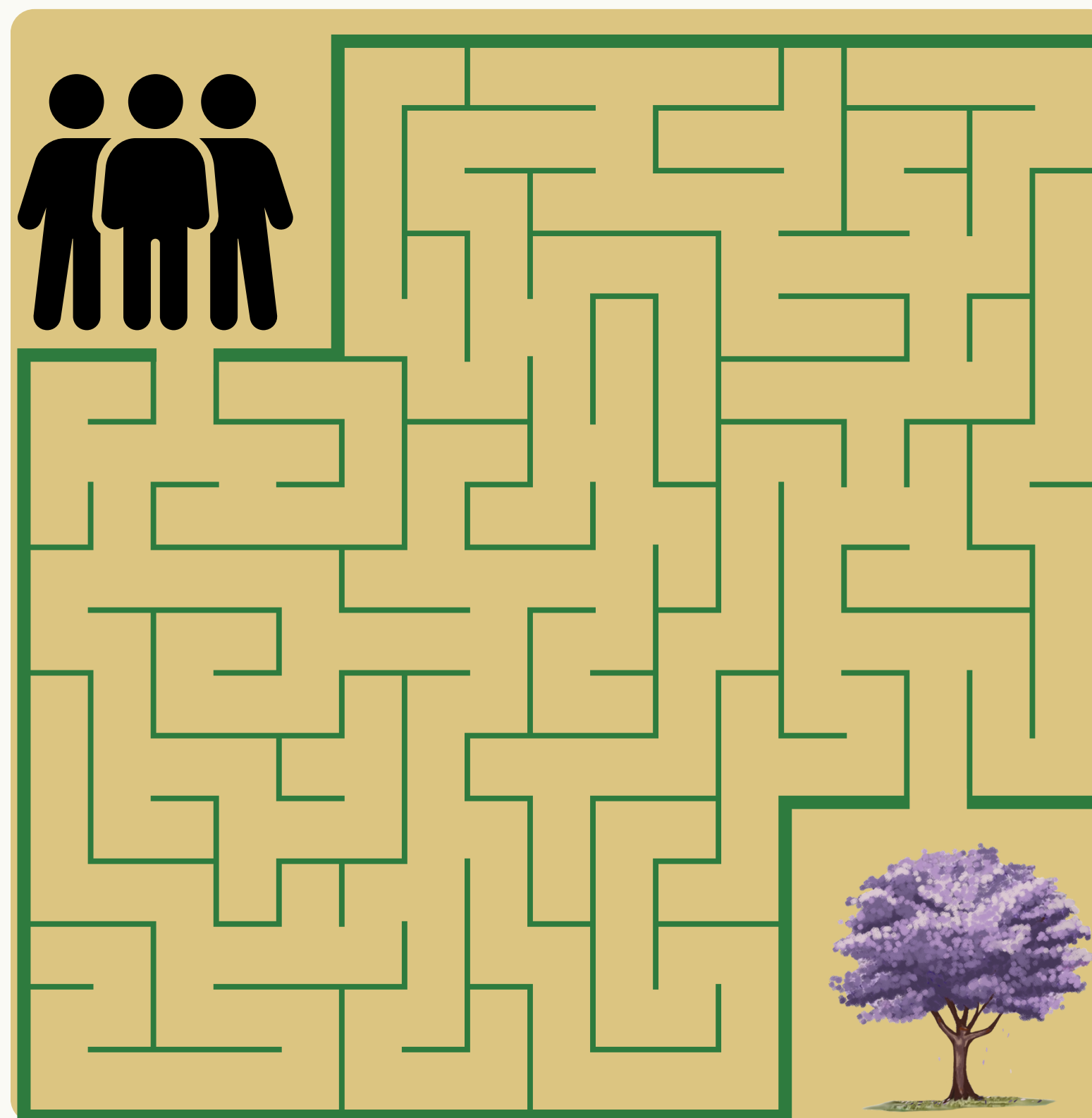
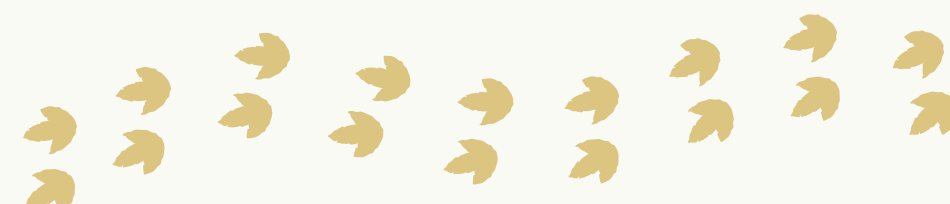
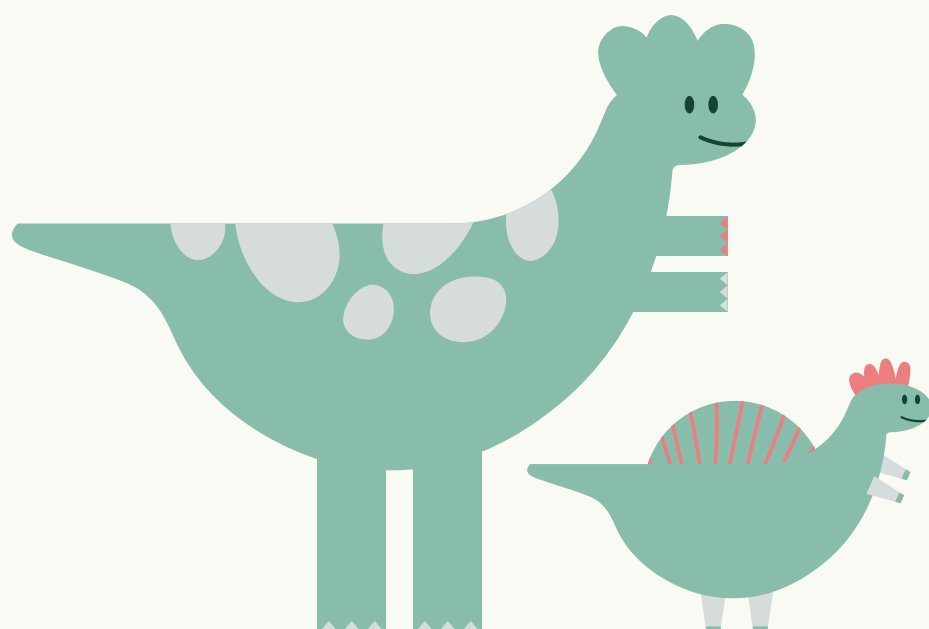


Tic Tac Tic Tac ...





Tic Tac Tic Tac ...



Depressa!  
Encontre o caminho que  
permitirá o plantio de  
árvores da caatinga, para  
evitar sua desertificação.

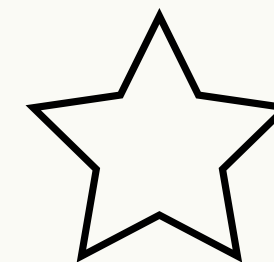
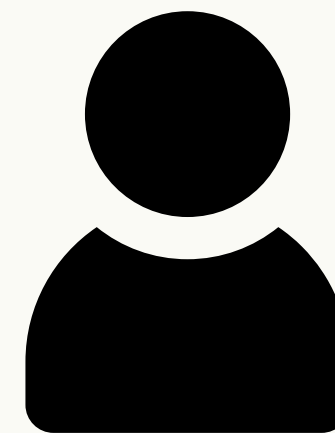
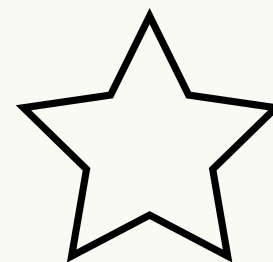
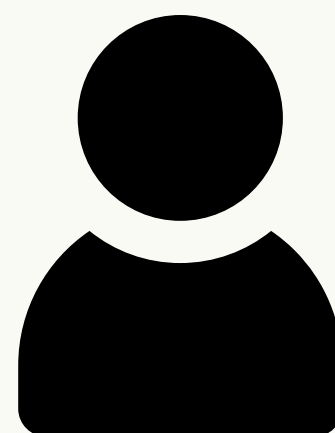
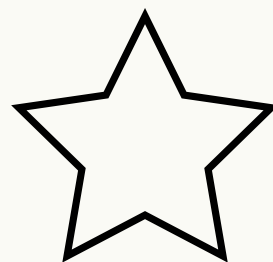
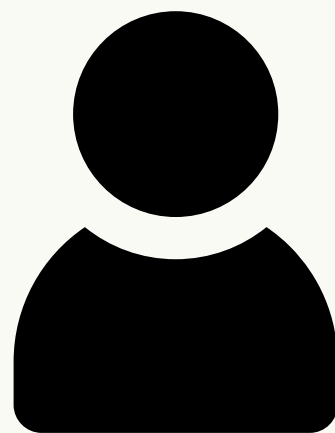
O tempo está passando...



# 6ª Rodada - Folha de Respostas



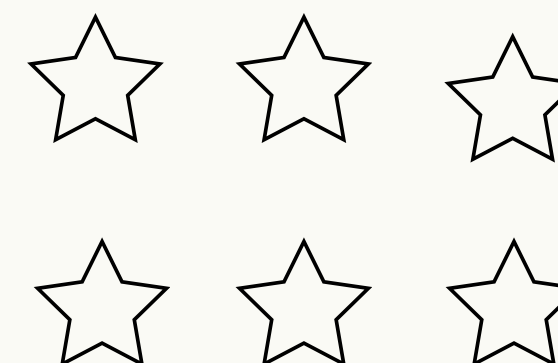
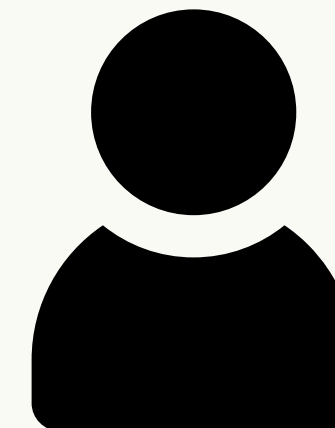
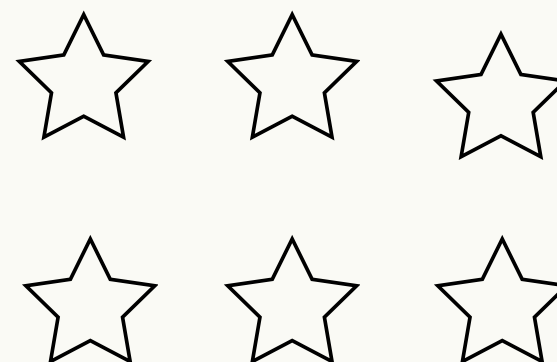
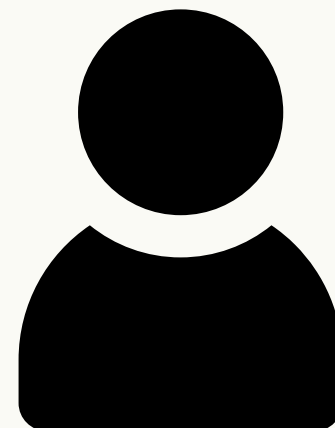
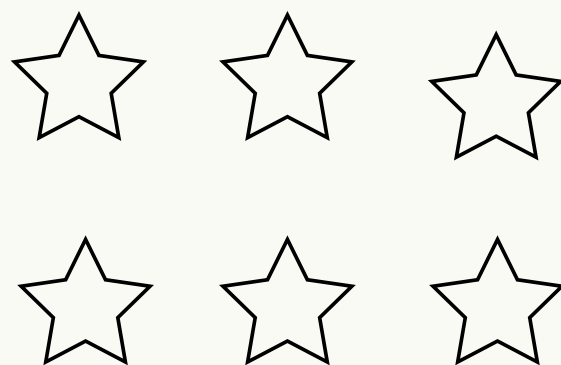
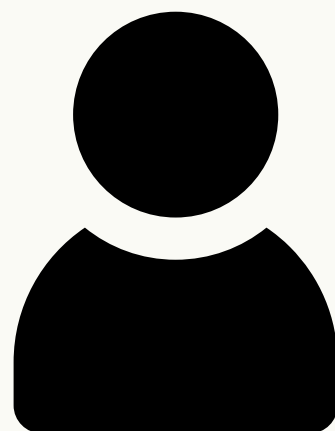
Pinte e atribua uma estrela ao vencedor da rodada!



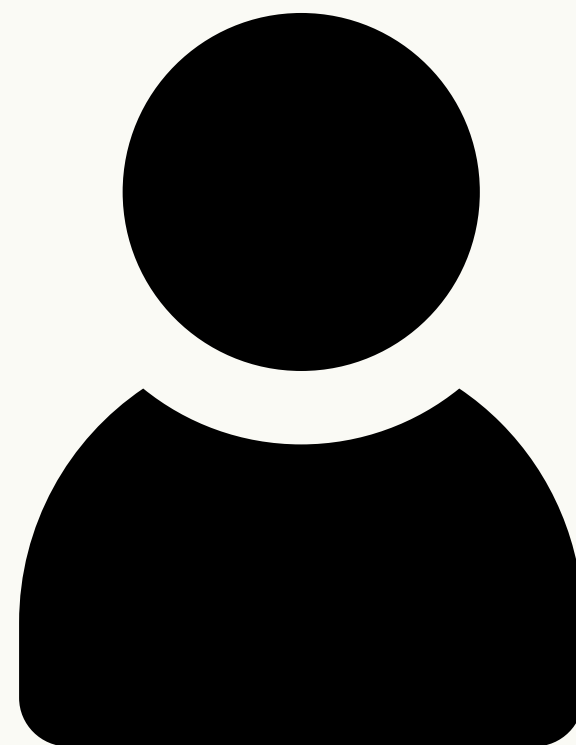
# Placar



Pinte o número de estrelas que cada jogador conquistou nas 6 rodadas.



# Parabéns!



Nome do(a)  
vendedor(a):

---







**Obrigado por  
participar da  
brincadeira!**

